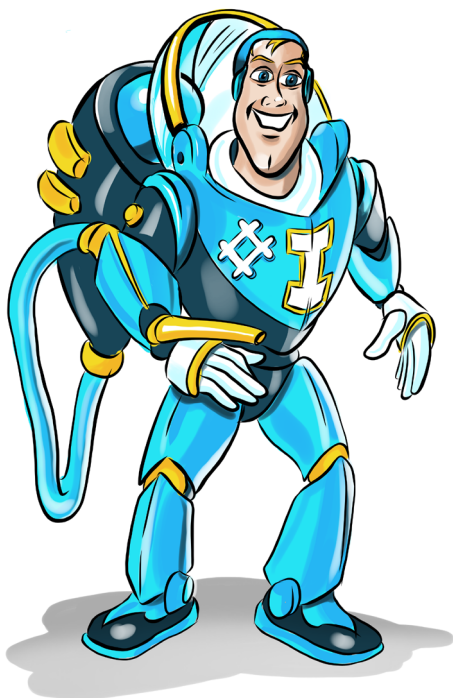
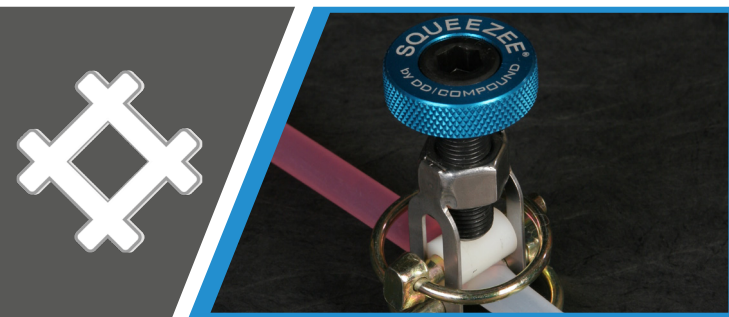


SQUEEZEE®

by DD|COMPOUND

VACUUM INFUSION AT ITS BEST

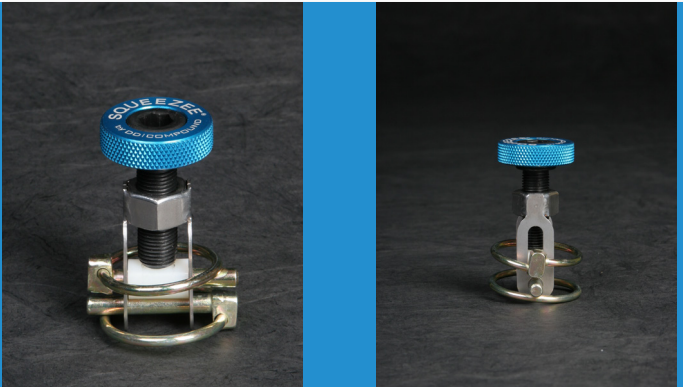


The tube clip Squeezee® allows exact dosing of the resin flow and easy disconnecting the resin line in the vacuum infusion.

Squeezee® of DD-Compound is the solution for adjusting the resin flow and disconnecting resin lines in the vacuum infusion. The tube clip will prove itself with easy handling and exact dosing of the resin flow. Squeezee® allows disconnecting the resin line without much force. Squeezee® is suitable for different kinds of tubes with an outer diameter up to 15mm. A model for an outer diameter up to 25mm is also available: Squeezer®. Because of the solid construction, Squeezee® and Squeezer® are suitable for the everyday, industrial use.

Advantages of Squeezee®

- Ideal for disconnecting all tube lines
- Requires only a minimum of force for disconnecting resin lines
- Exact dosing of the resin flow
- Designed for the everyday, industrial application
- Available in two models: for tubes up to 15mm or 25mm outer diameter



DD|COMPOUND

Lengericher Straße 8
49479 Ibbenbüren
Germany

fon: +49 (0)5451 50447-0
fax: +49 (0)5451 50447-10
info@dd-compound.com
www.dd-compound.com

